

NOTES

- CO-ORDINATION OF THIS INSTALLATION WITH HEATING, VENTILATION, AIR CONDITIONING & ELECTRICAL WORK IS BY OTHERS.
- RAILTECH REQUIRES WRITTEN APPROVAL OF ALL SHOP DRAWINGS BEFORE STARTING PRODUCTION.
- CUT-OUTS FOR SPRINKLERS, COLUMNS THERMOSTATS, SWITCHES, ETC. ARE DONE IN FIELD BY OTHERS.

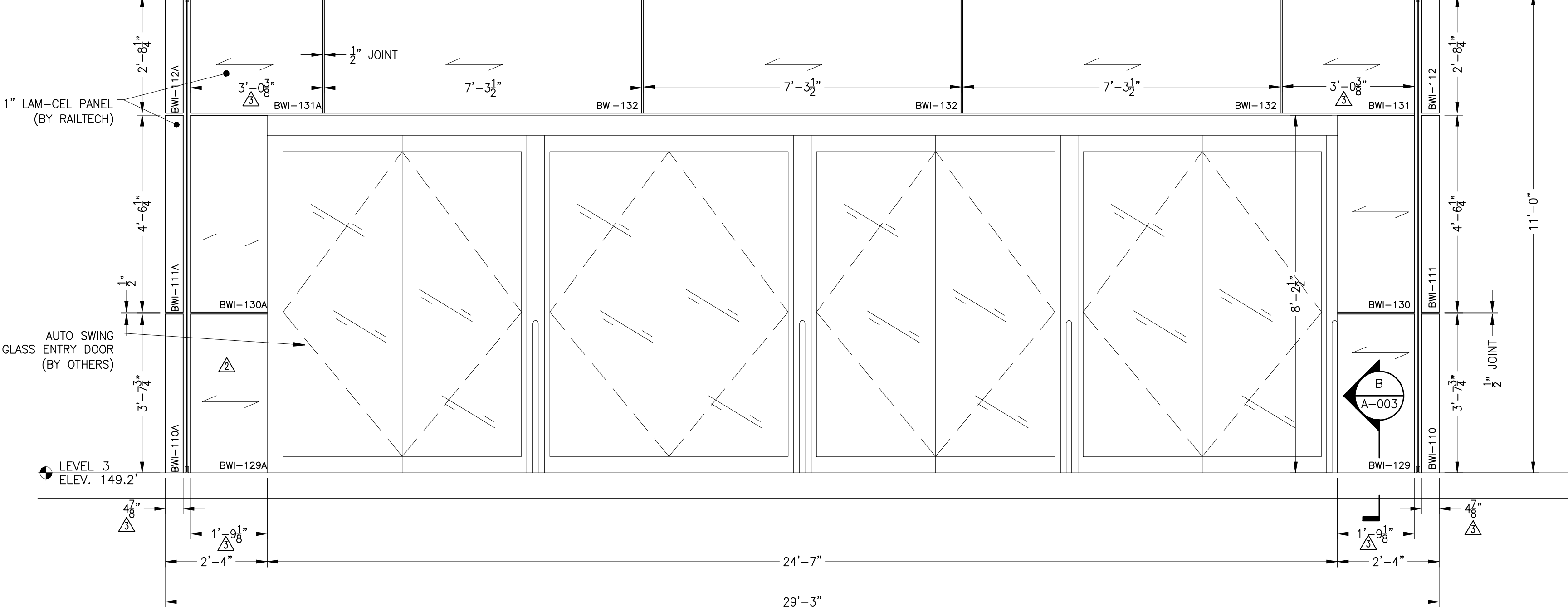
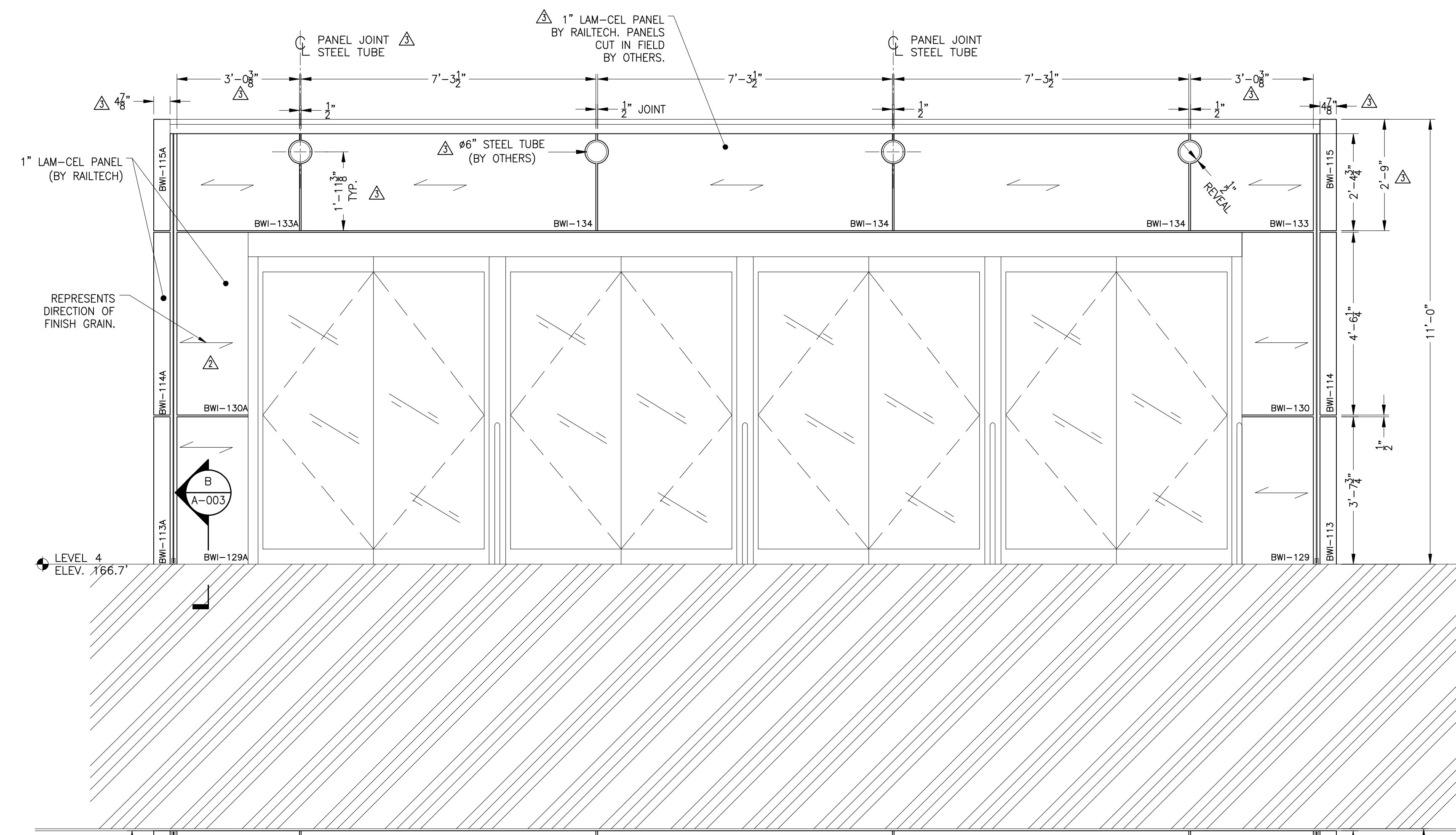
PANEL COMPOSITION

FACE: 0.062",
16 GAUGE
#304 STAINLESS STEEL

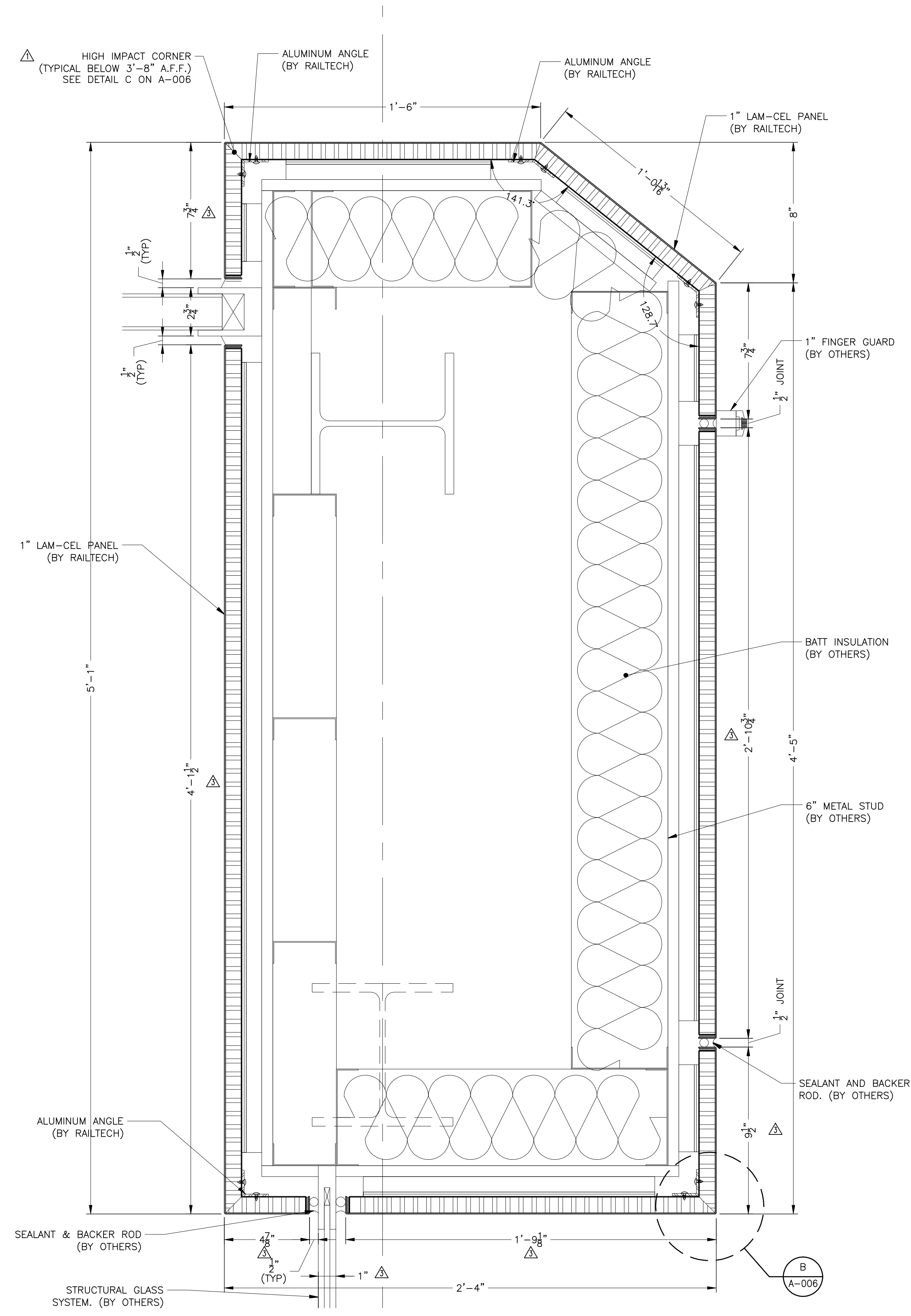
FINISH: #4 BRUSH

CORE: 3/8" CELL SIZE
COMMERCIAL GRADE
ALUMINUM HONEYCOMB
PERFORATED

BACKER: 0.040", EPOXY
PRIMED ALUMINUM



1 PARTIAL INTERIOR SECTION - TYPICAL
@ LEVELS 3&4 VESTIBULES
A-001 SCALE: 1/2" = 1'-0"



A TYPICAL VESTIBULE DETAIL (LEVEL 4)
A-001 SCALE: 3" = 1'-0"

REVIS	DESCRIPTION	BY	DATE	APP
△	REVISED AS REQUESTED	J.A.	06.12.04	M.M
△	REVISED GRAIN DIRECTION	J.A.	30.10.04	M.M
△	MODIFIED DRAWING NOTES, PANEL DIMENSIONS, ADDED TAG NUMBERS.	J.A.	24.03.04	M.M

LAMCEL
entrances

Part of the Railtech Architectural Group
(514)457-4760 www.lamcel.com info@lamcel.com

client

project
BALTIMORE WASHINGTON INTERNATIONAL AIRPORT

contract number
10199

SECTION AND DETAIL

drawn
J. ALBERT
verified

date
21 NOV. 2003
date

approved
M. McDONALD
scale
AS NOTED

date
28 NOV. 2003
revision
3