

NOTES

- CO-ORDINATION OF THIS INSTALLATION WITH HEATING, VENTILATION, AIR CONDITIONING & ELECTRICAL WORK IS BY OTHERS.
- RAILTECH REQUIRES WRITTEN APPROVAL OF ALL SHOP DRAWINGS BEFORE STARTING PRODUCTION.
- CUT-OUTS FOR SPRINKLERS, COLUMNS THERMOSTATS, SWITCHES, ETC. ARE DONE IN FIELD BY OTHERS.

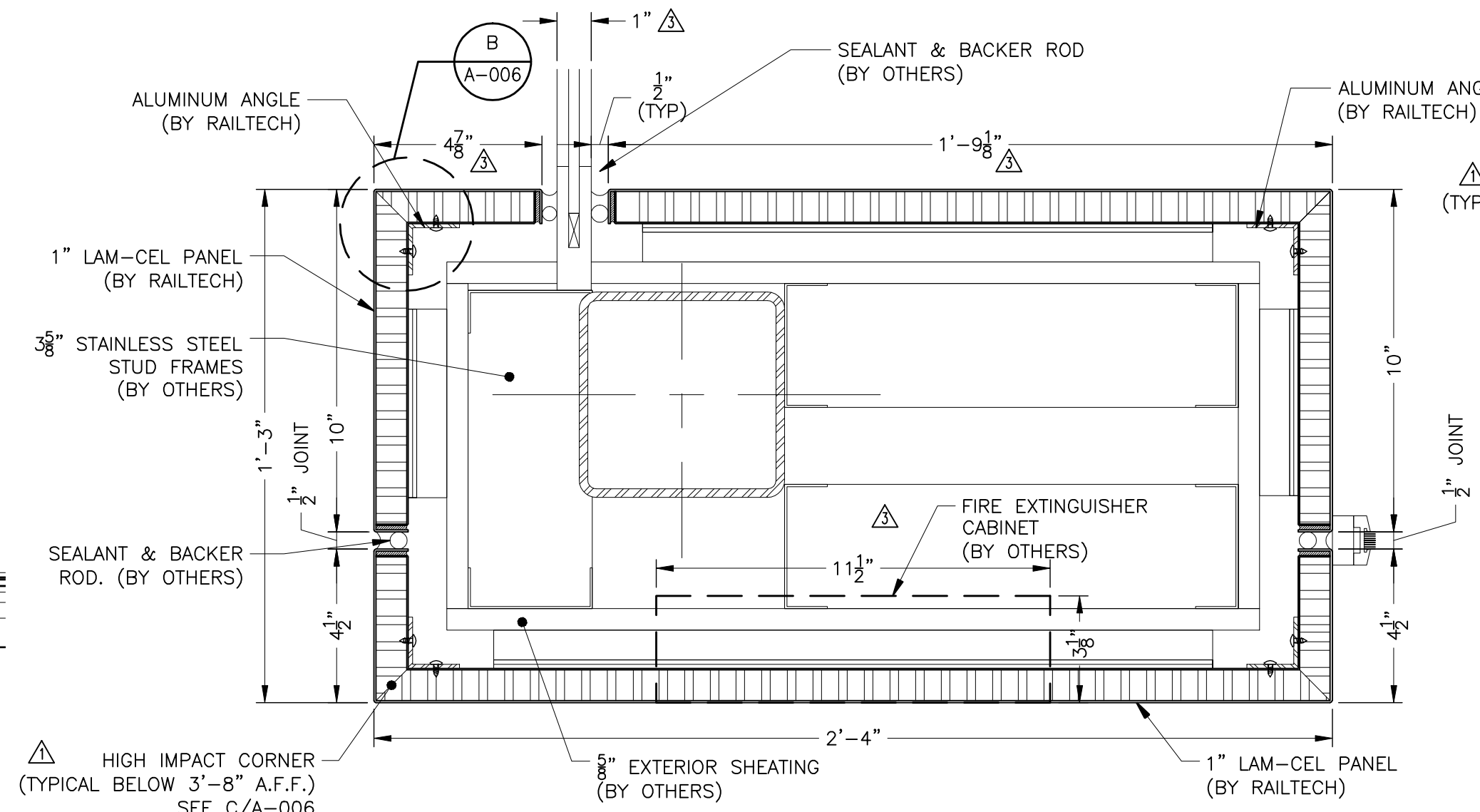
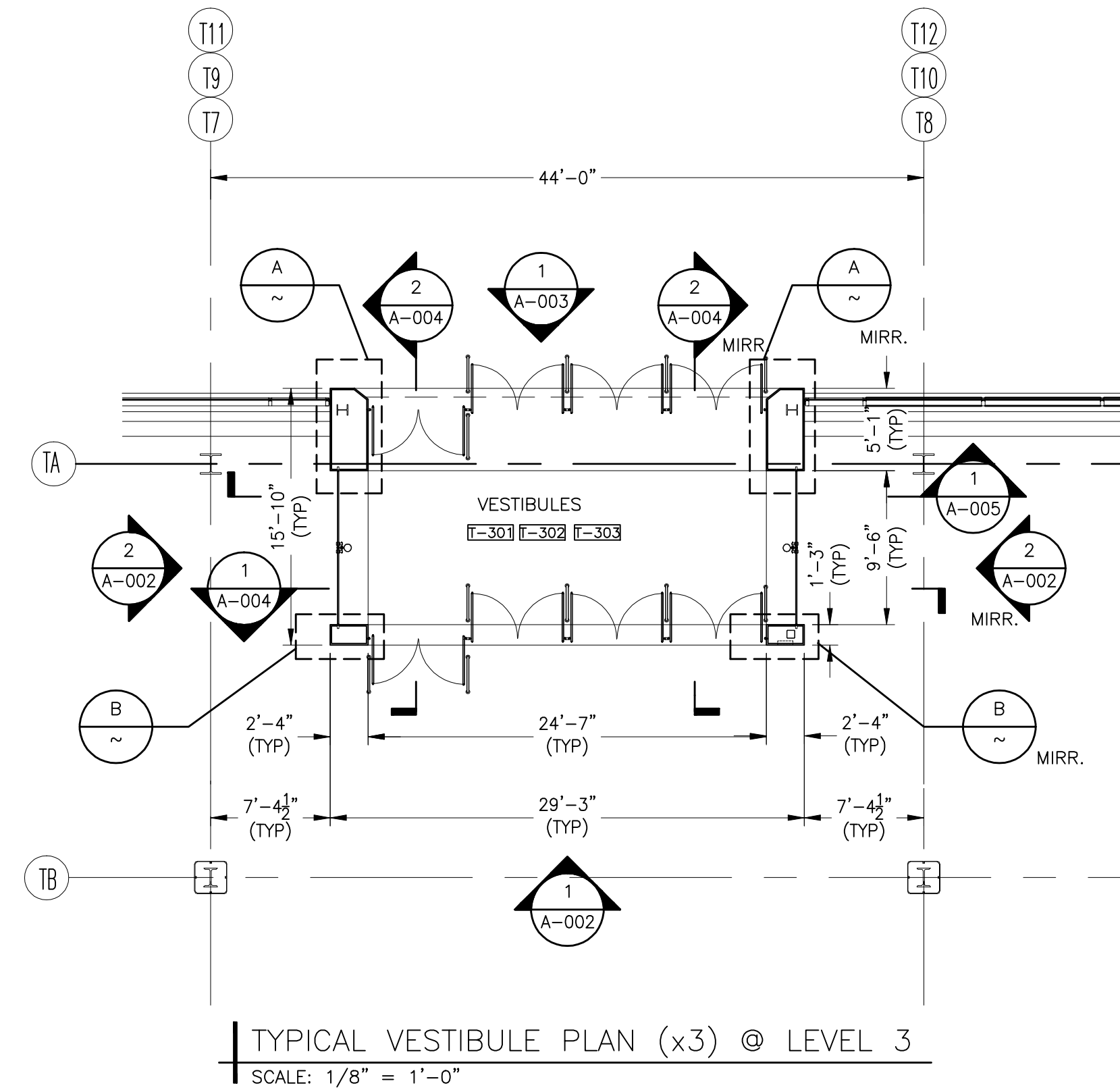
PANEL COMPOSITION

FACE: 0.062"
16 GAUGE
#304 STAINLESS STEEL

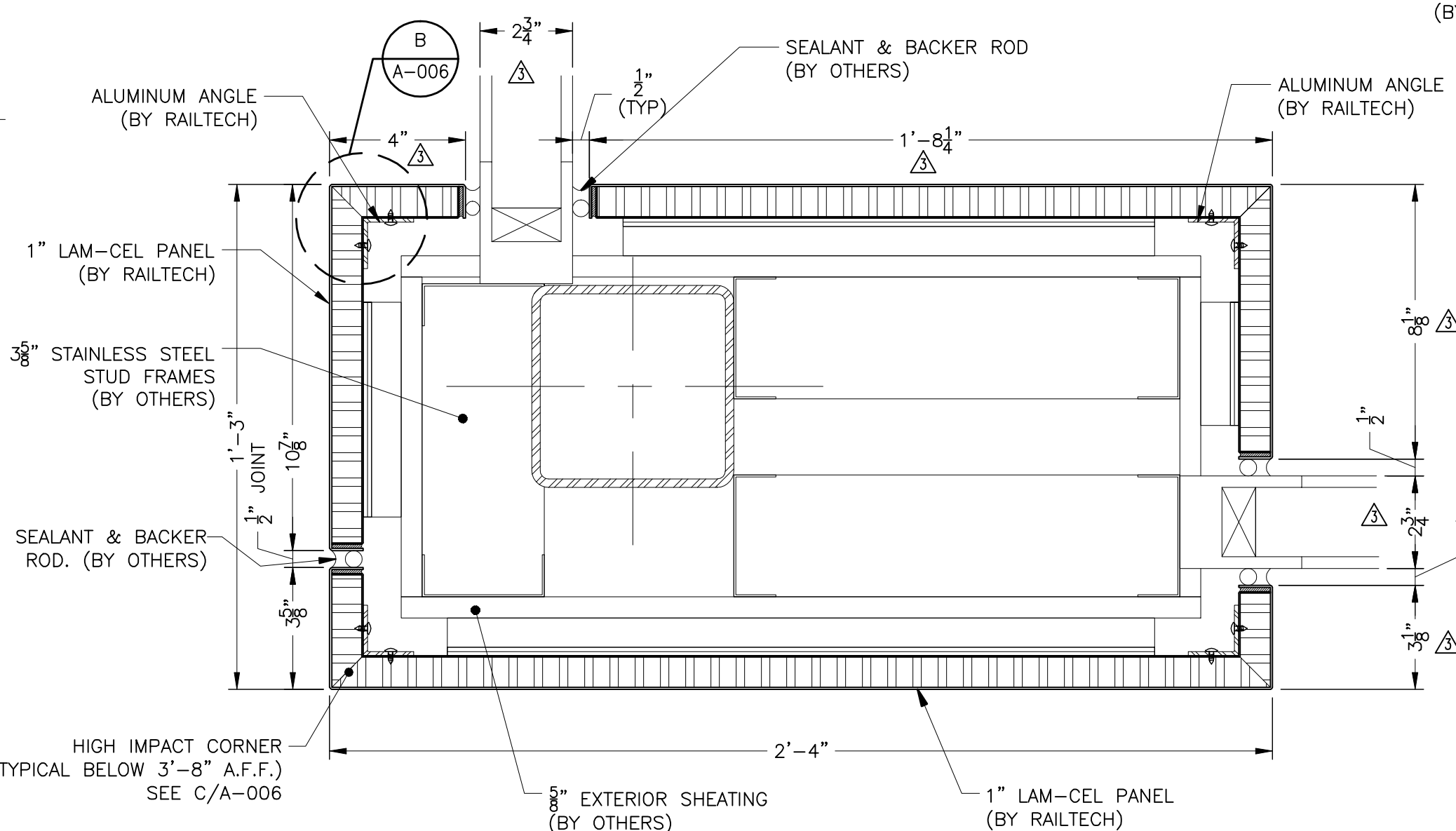
FINISH: #4 BRUSH

CORE: 3/8" CELL SIZE
COMMERCIAL GRADE
ALUMINUM HONEYCOMB
PERFORATED

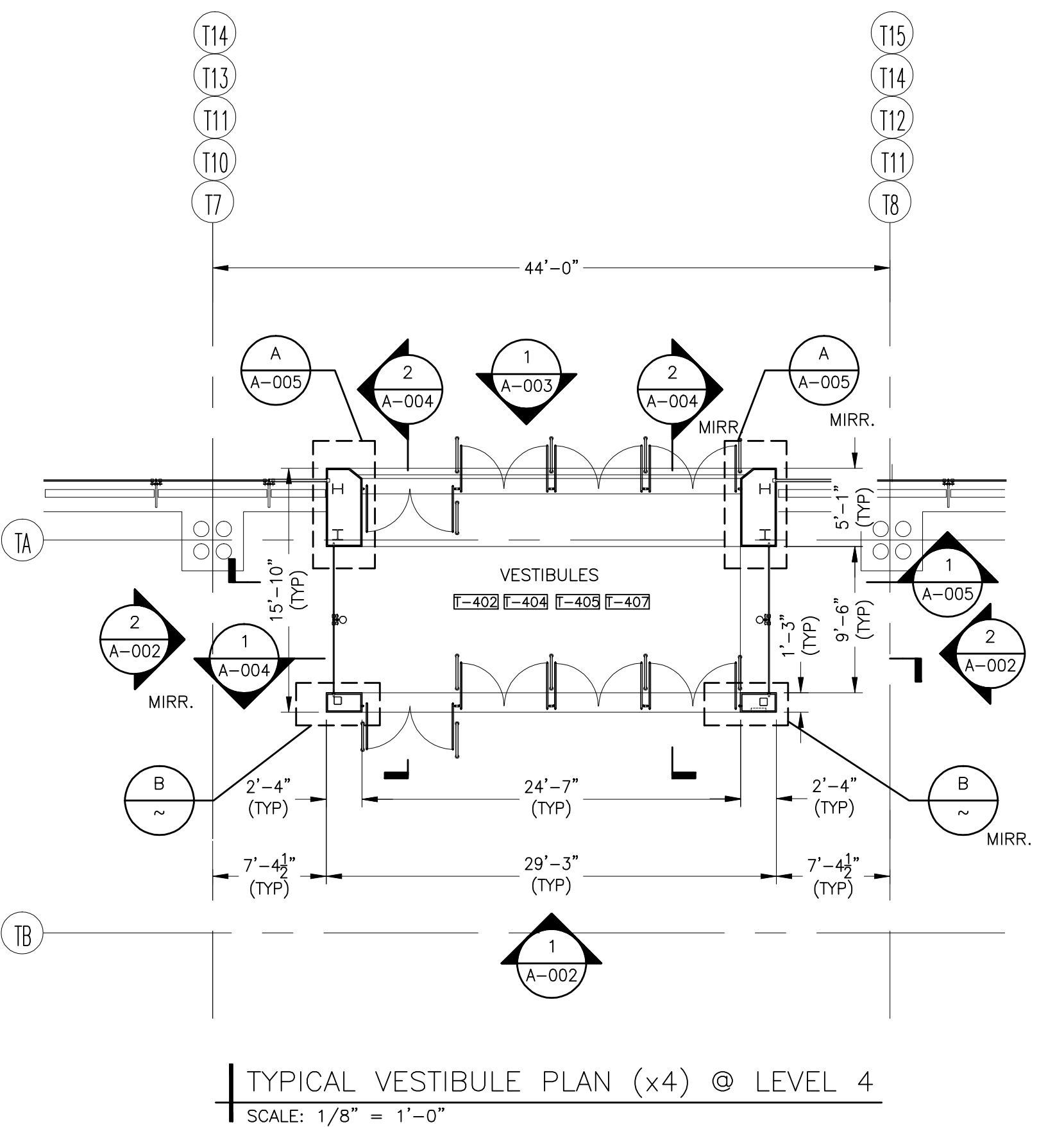
BACKER: 0.040" EPOXY
PRIMED ALUMINUM



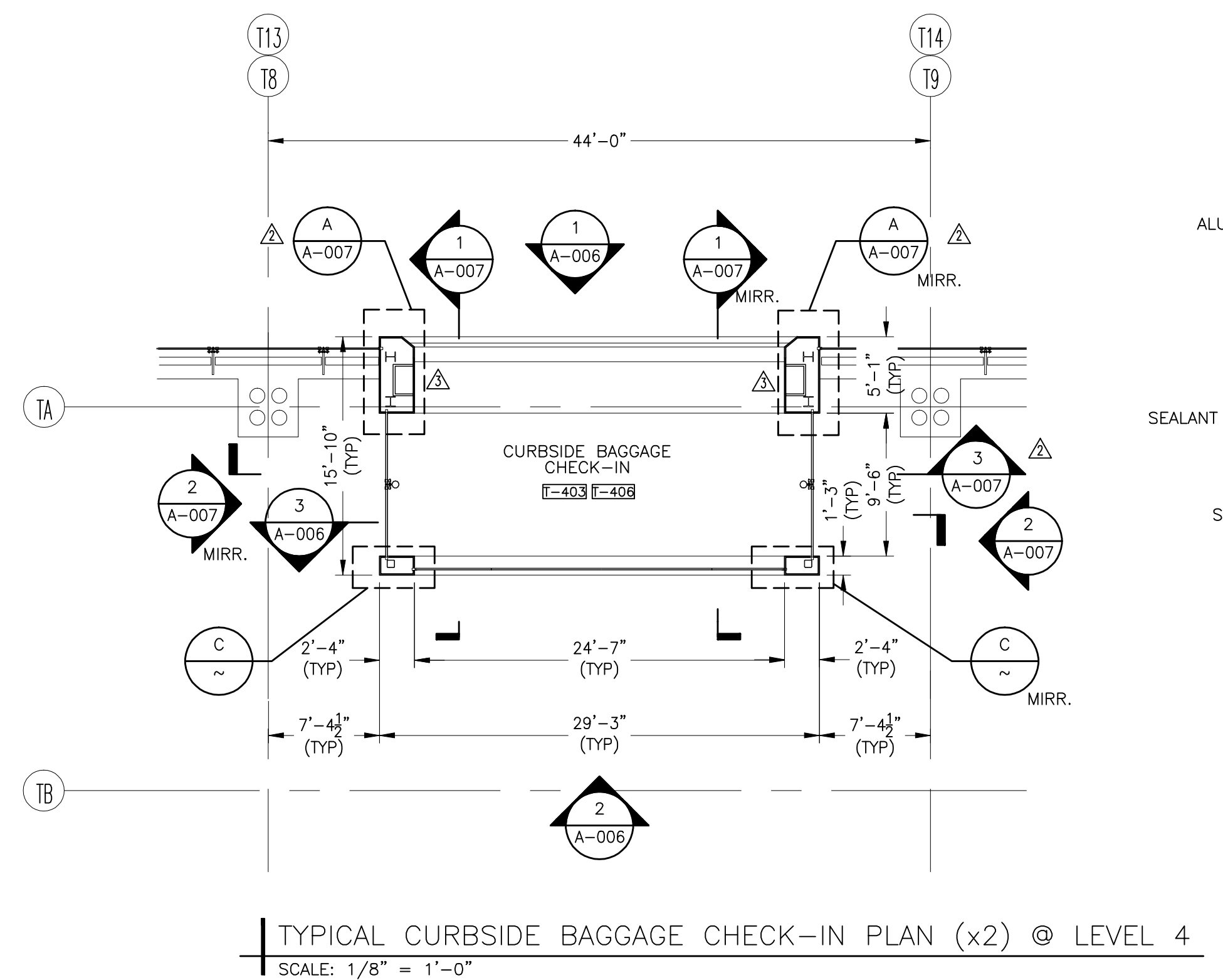
B | TYPICAL DETAIL @ VESTIBULES (LEVELS 3&4)
SCALE: 3" = 1'-0"



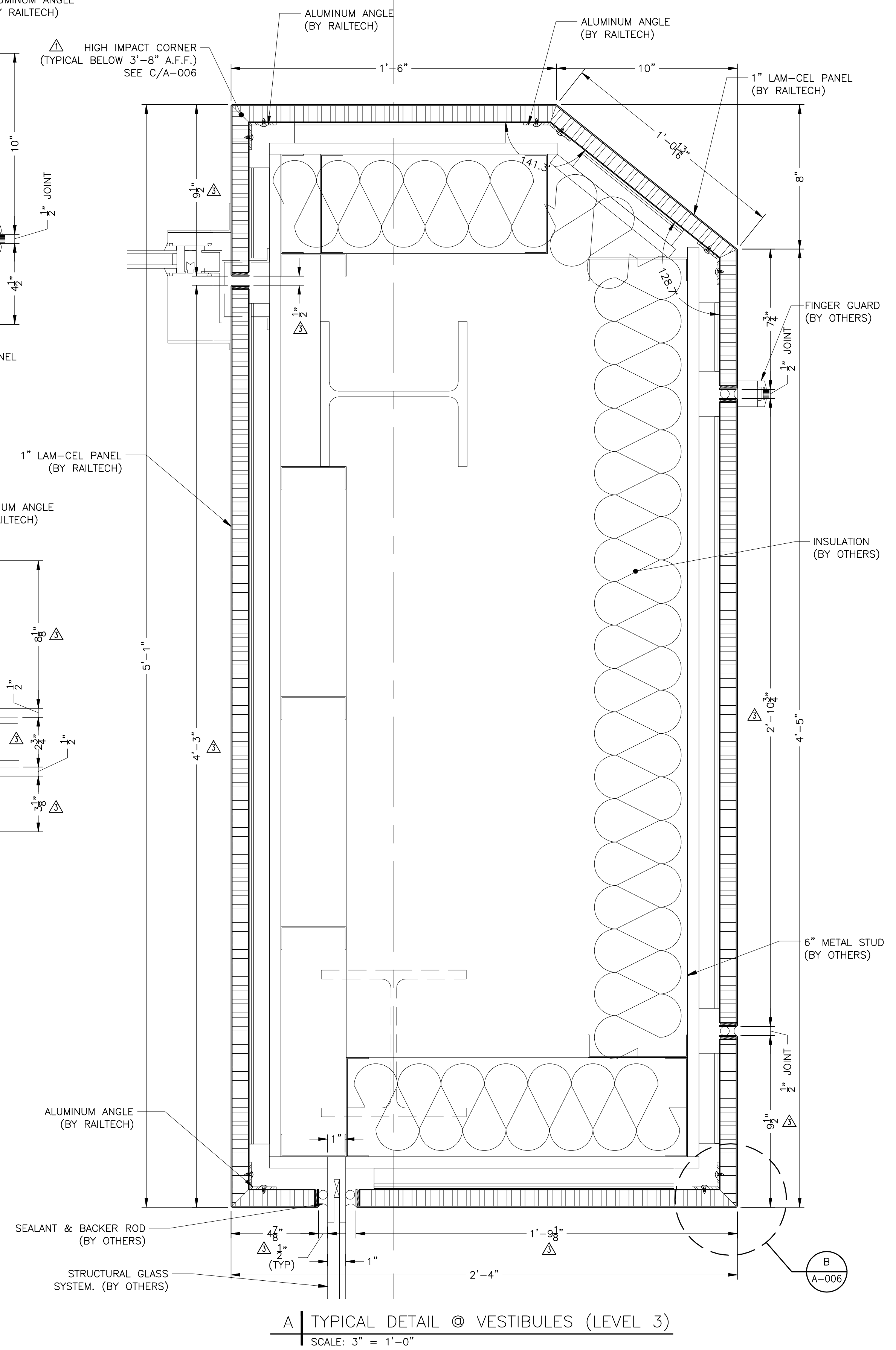
C | TYPICAL DETAIL @ CURBSIDE BAGGAGE CHECK-IN
SCALE: 3" = 1'-0"



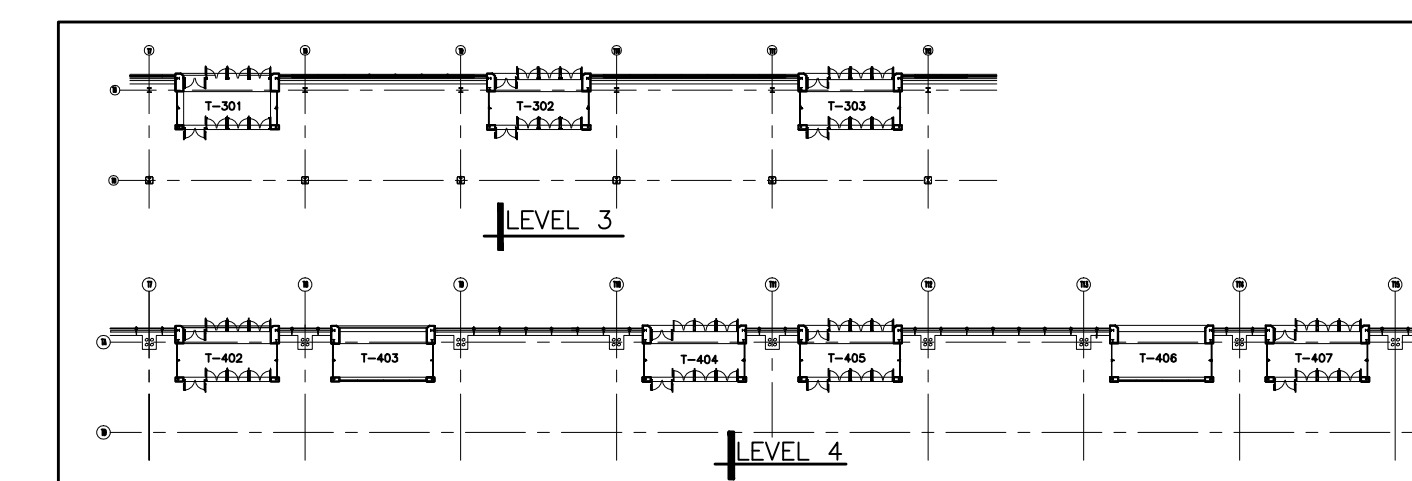
TYPICAL VESTIBULE PLAN (x4) @ LEVEL 4
SCALE: 1/8" = 1'-0"



TYPICAL CURBSIDE BAGGAGE CHECK-IN PLAN (x2) @ LEVEL 4
SCALE: 1/8" = 1'-0"



A | TYPICAL DETAIL @ VESTIBULES (LEVEL 3)
SCALE: 3" = 1'-0"



KEY PLAN

REV.	DESCRIPTION	BY	DATE	APP
△	REVISED AS REQUESTED	J.A.	03.12.04	M.M.
△	ADDED LOCKER LOC.	J.A.	23.07.04	M.M.
△	MODIFIED DRAWING NOTES	J.A.	24.03.04	M.M.

LAMCEL
entrances

Part of the Railtech Architectural Group
(814)457-4760 www.lamcel.com info@lamcel.com

client
BALTIMORE WASHINGTON INTERNATIONAL AIRPORT

contract number
10199

PLANS AND DETAILS

drawn date
J. ALBERT 14 NOV. 2003

verified date

approved date
M. McDONALD 28 NOV. 2003

scale drawing number revision
AS NOTED A-001 3