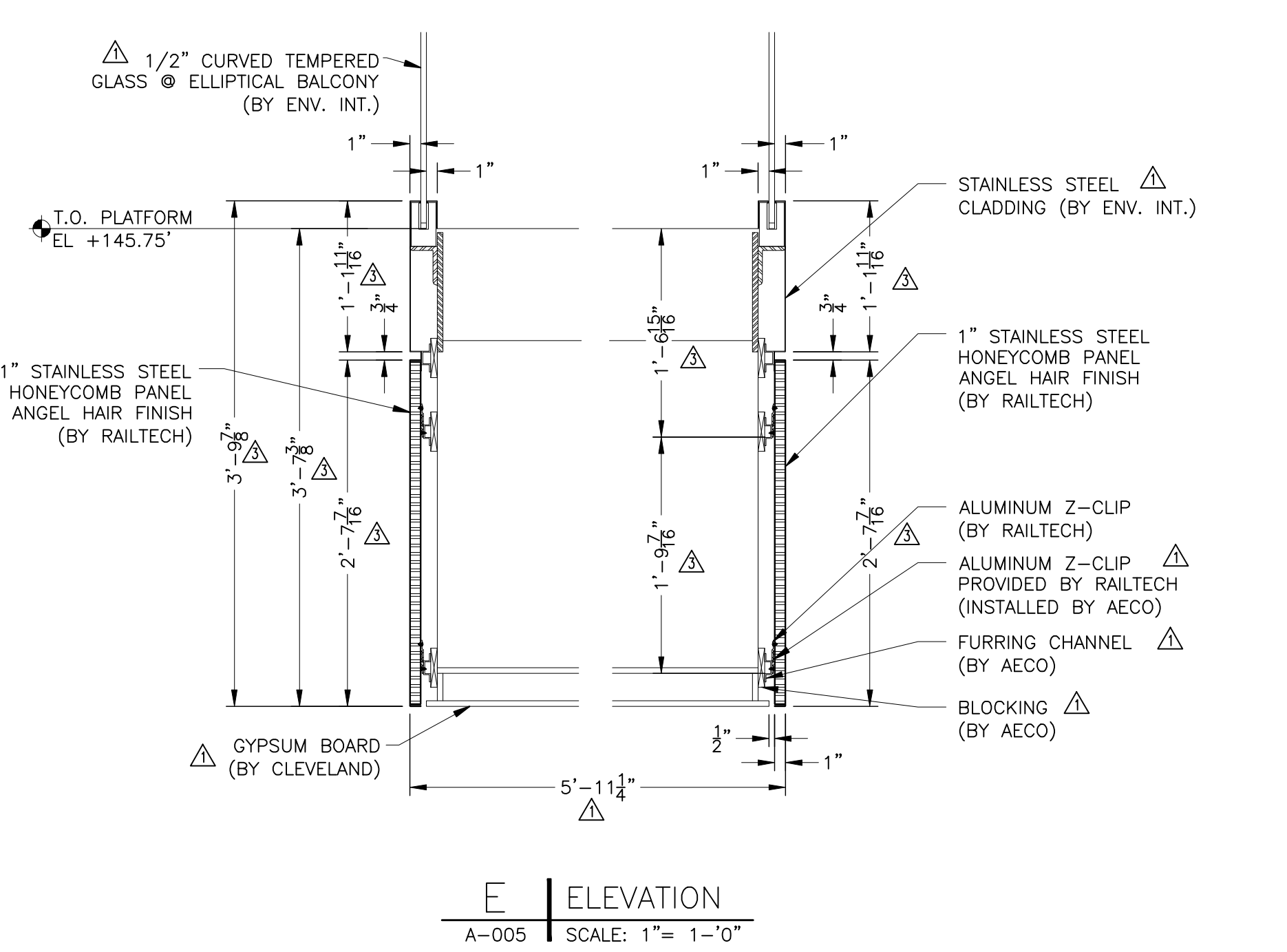
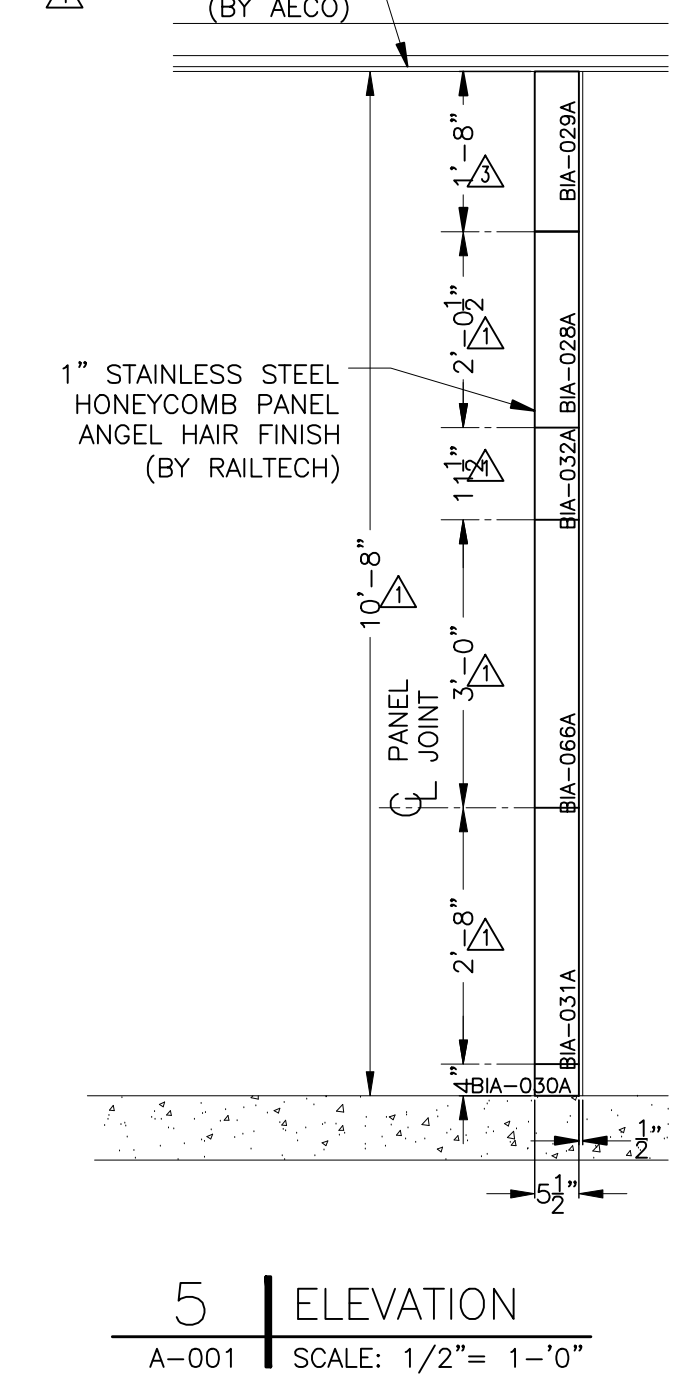
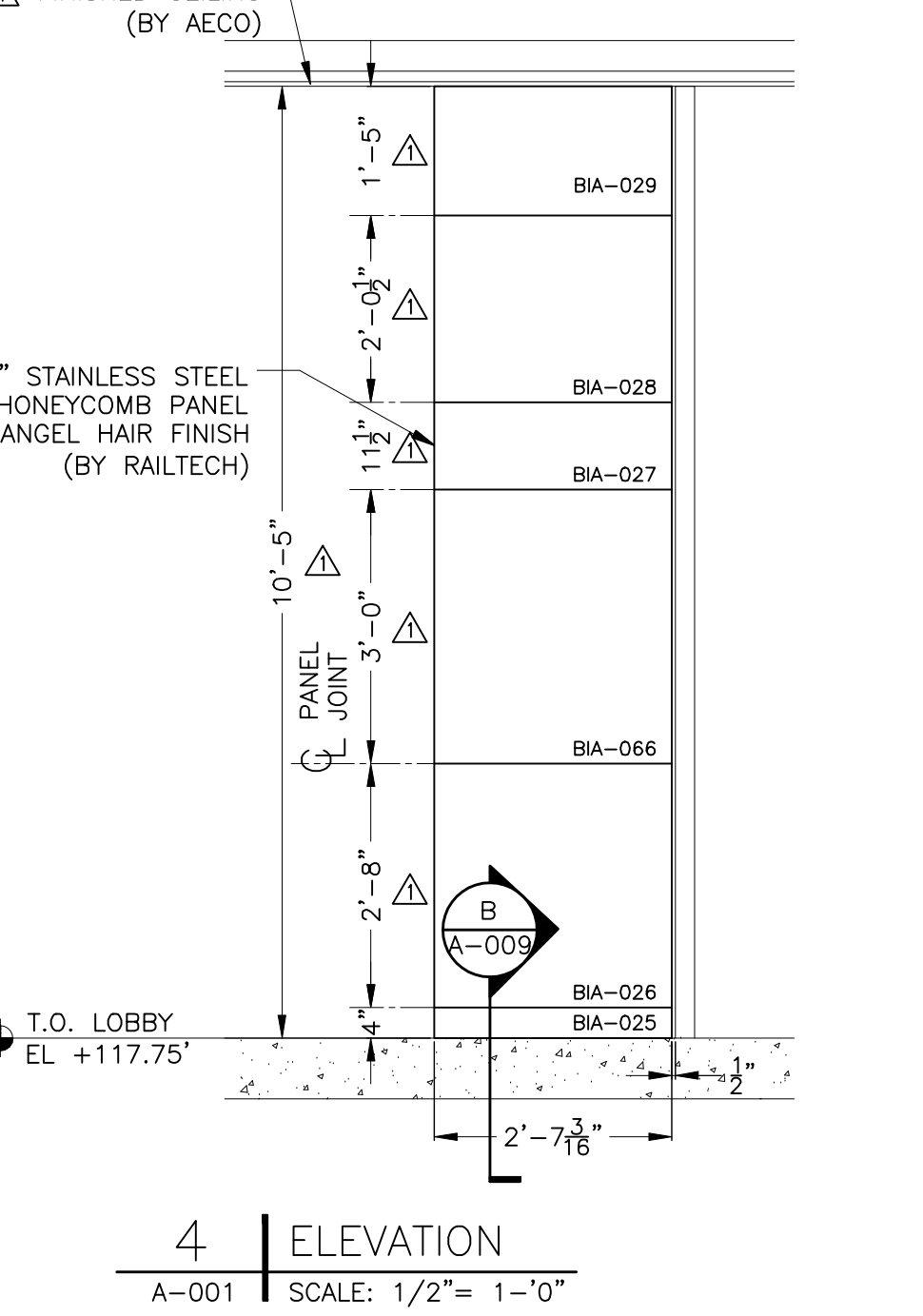
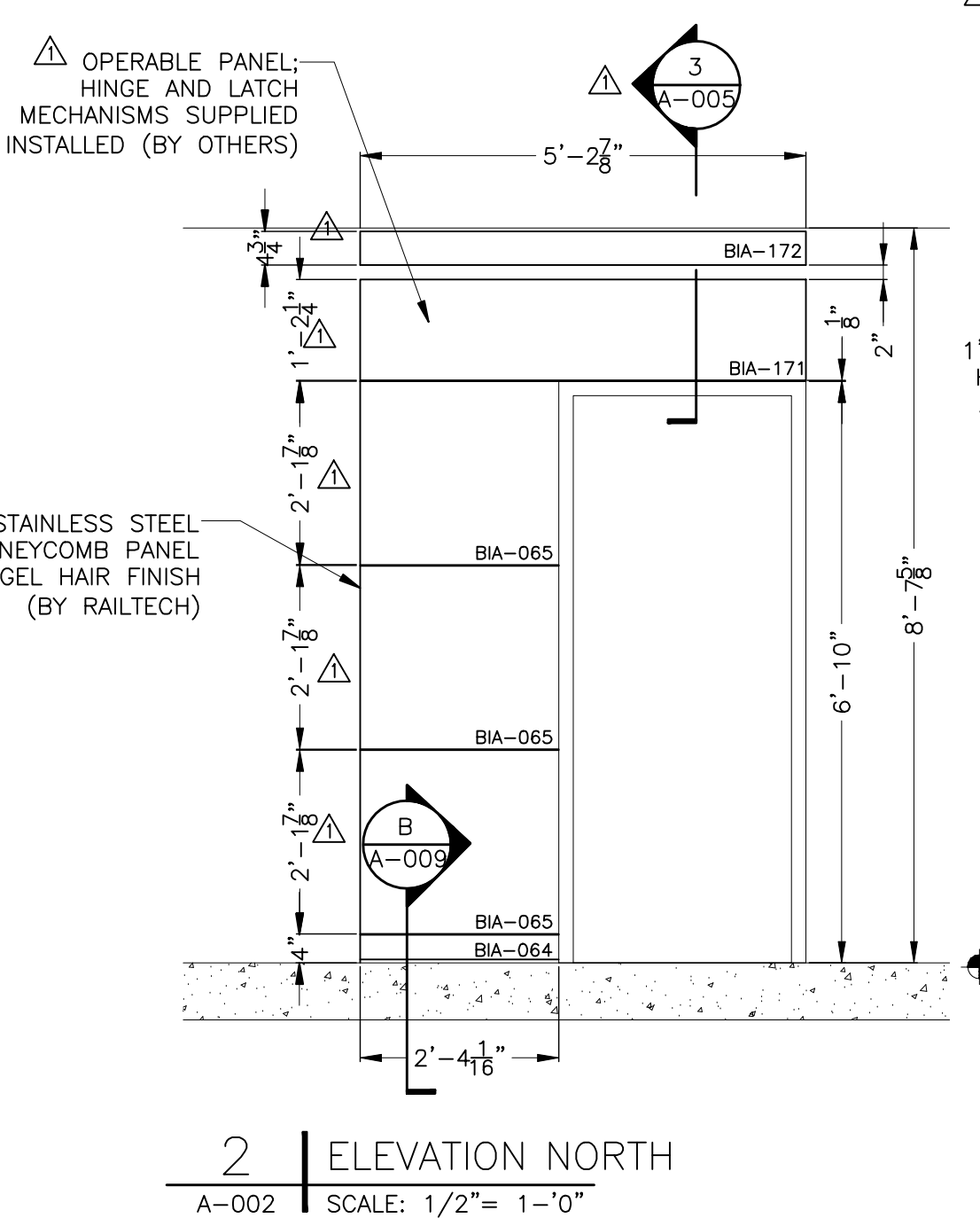
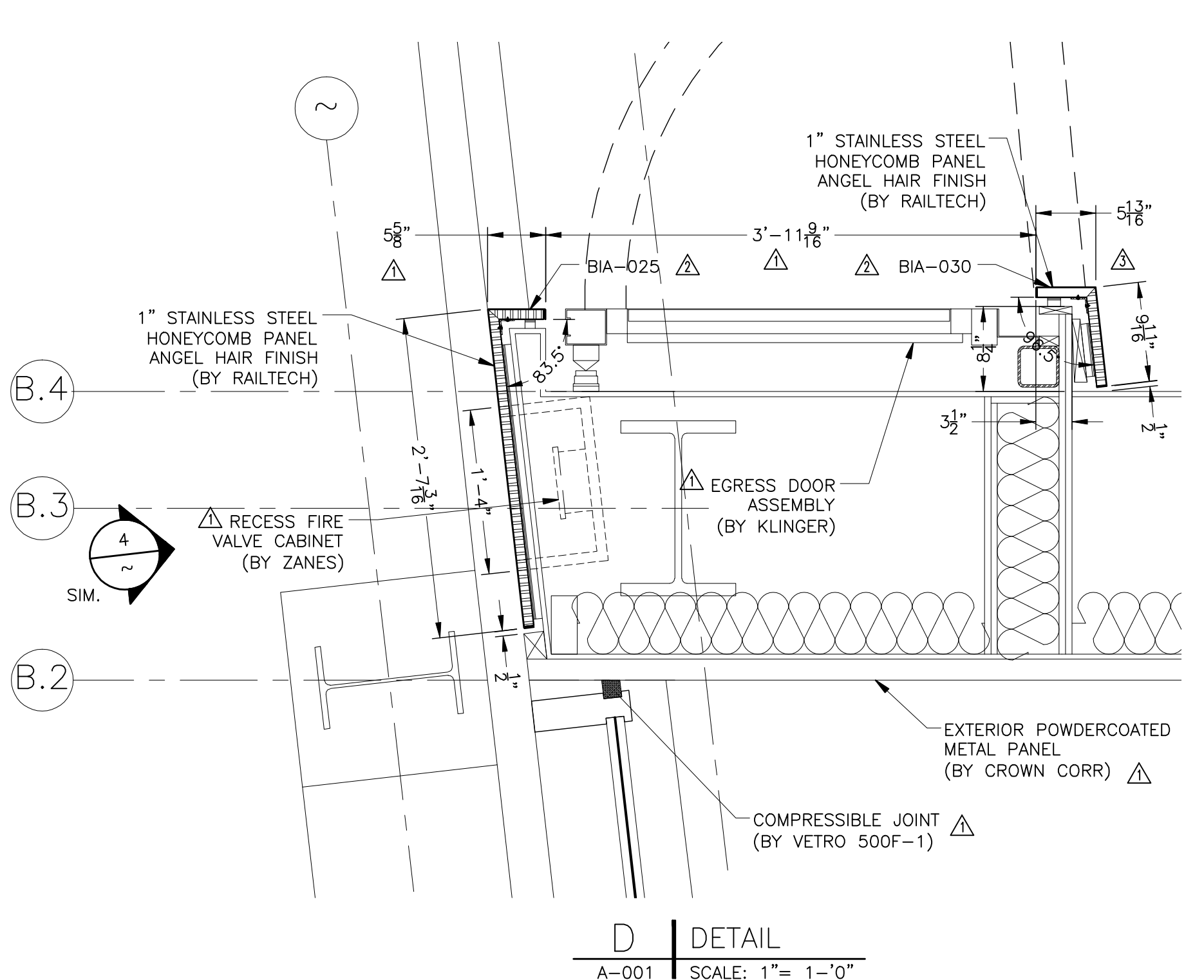
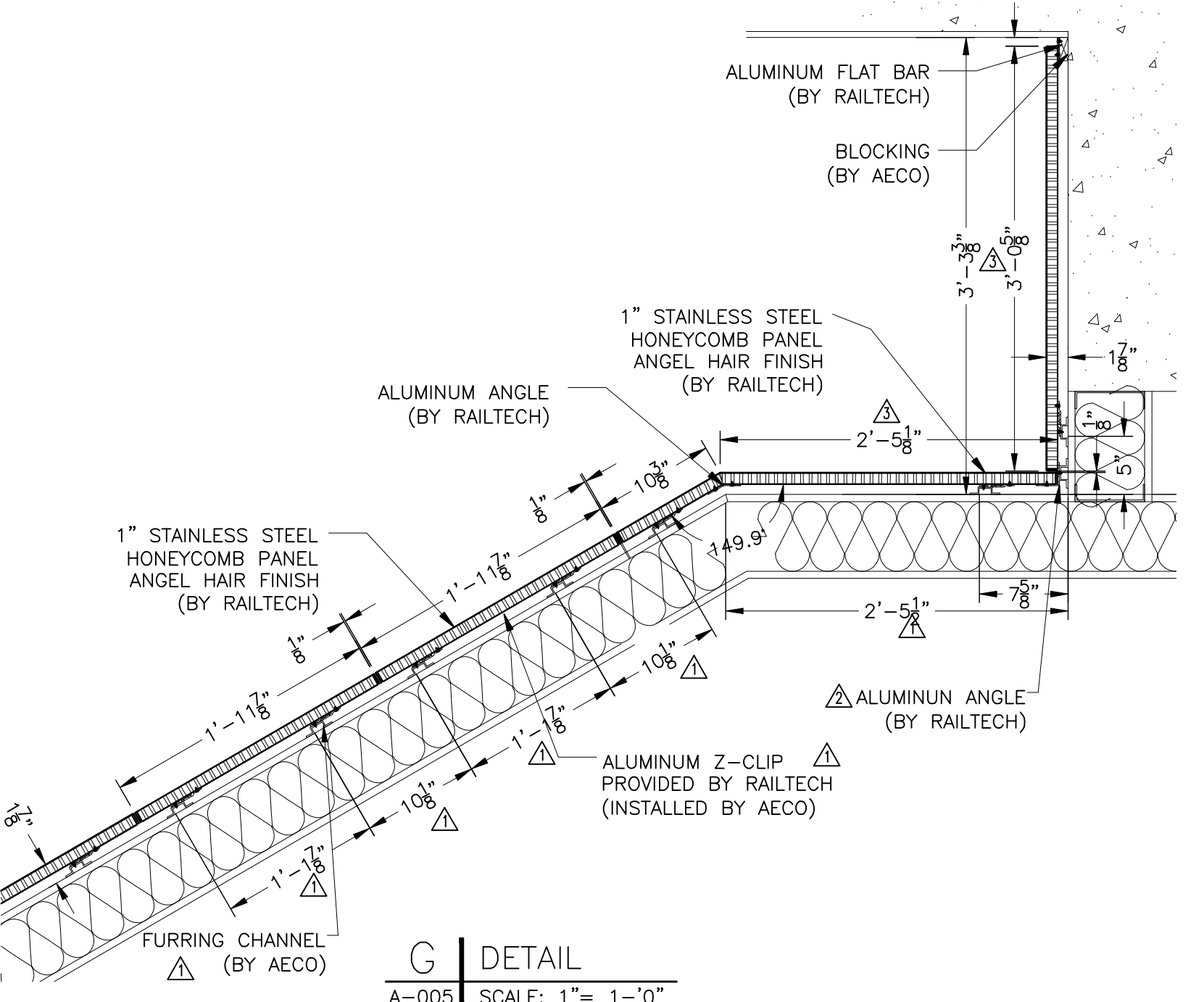
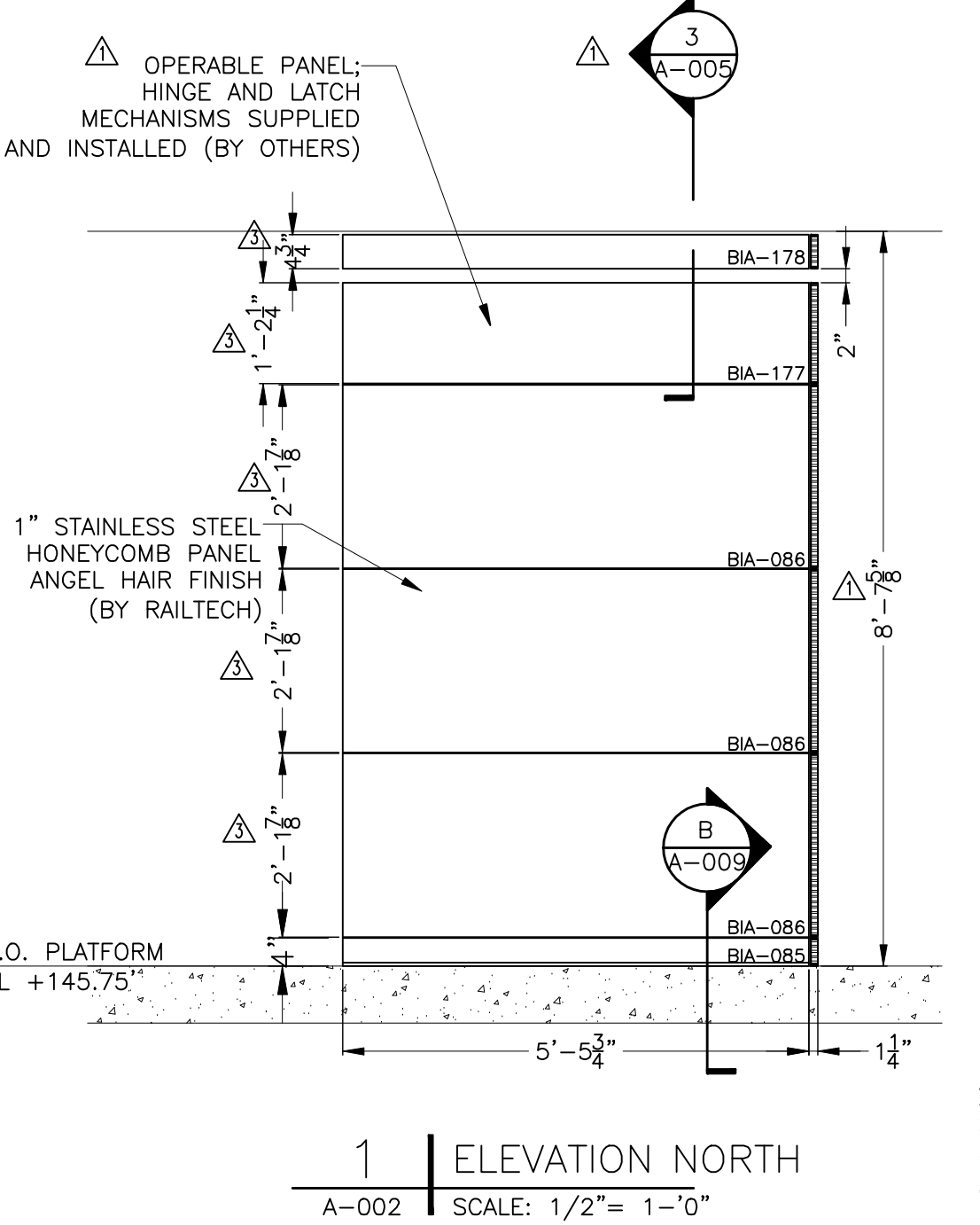
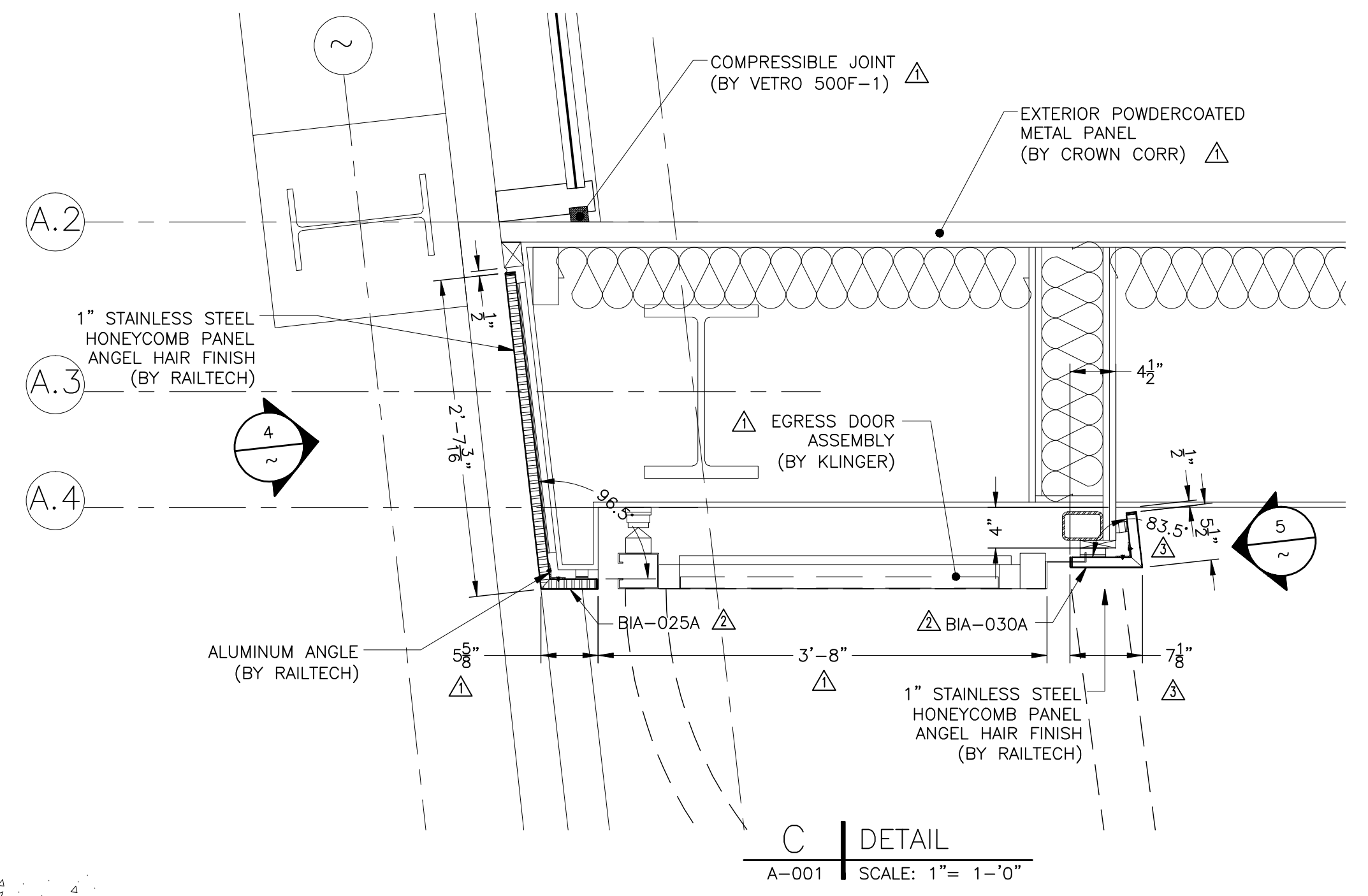
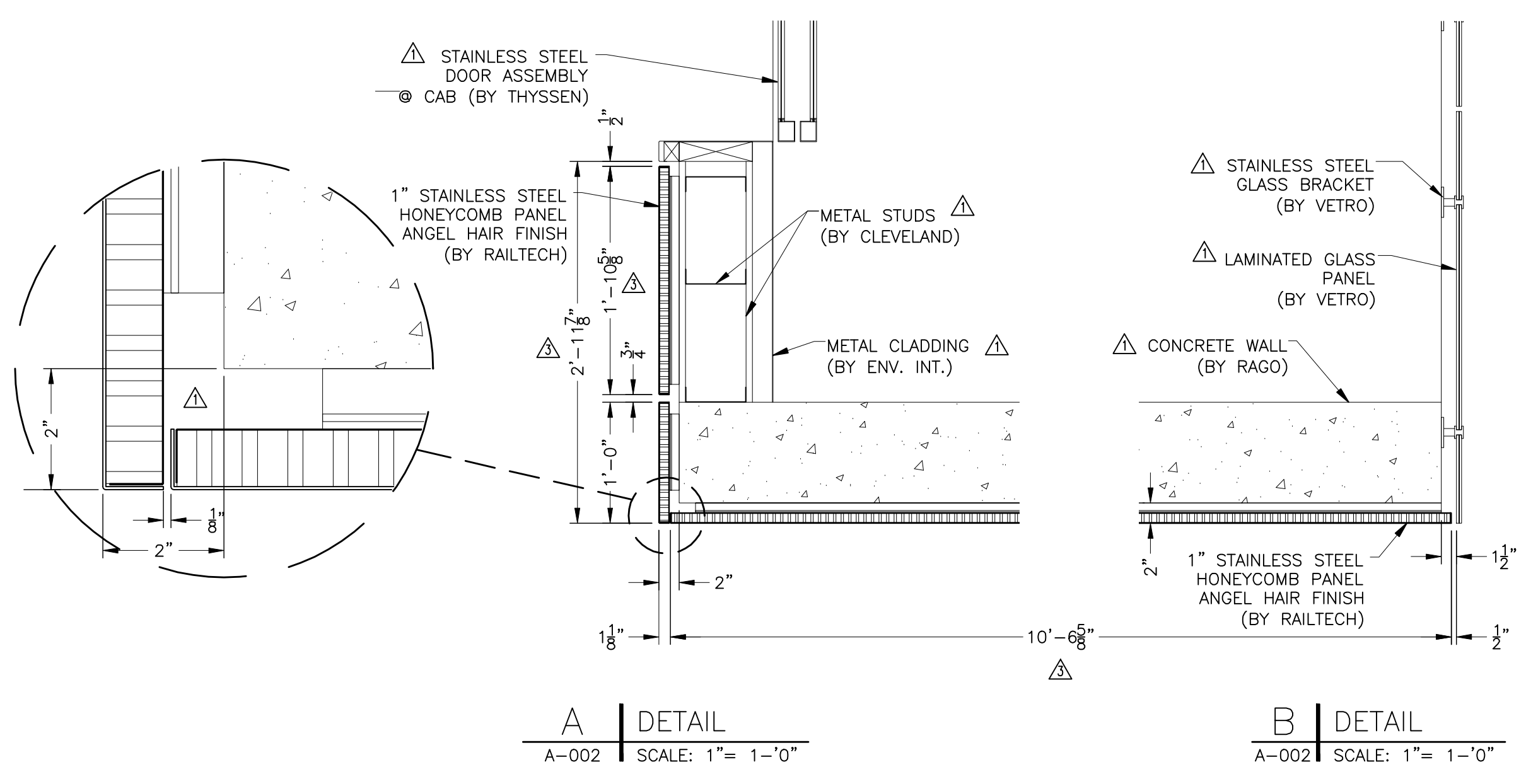
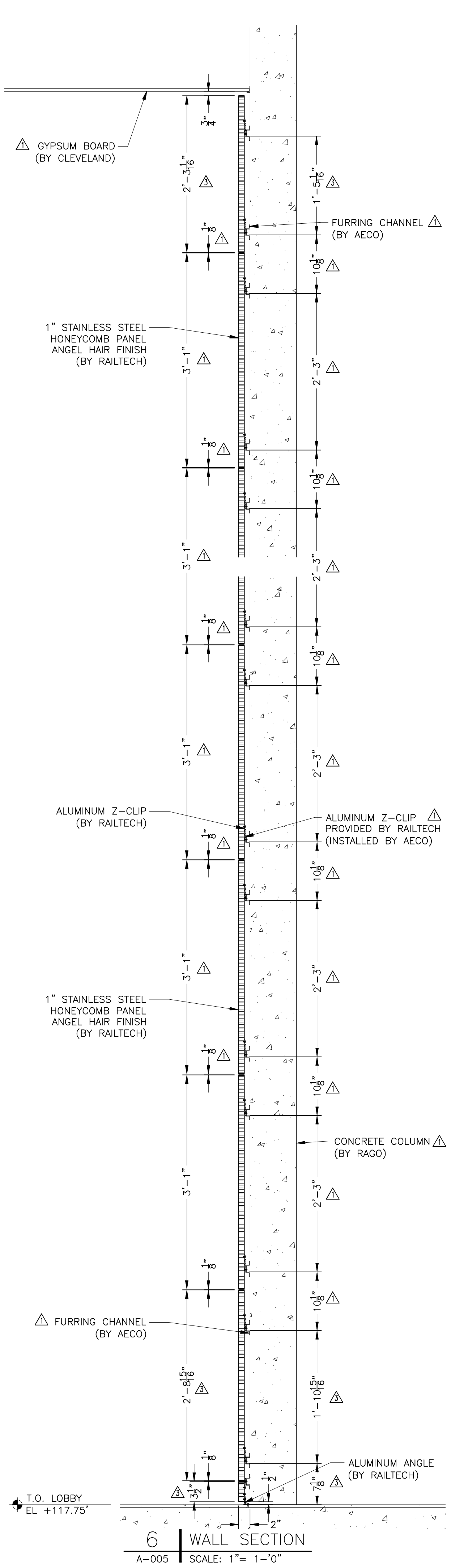


**NOTES**

1. CO-ORDINATION OF THIS INSTALLATION WITH HEATING, VENTILATION, AIR CONDITIONING & ELECTRICAL WORK IS BY OTHERS.
2. RAILTECH REQUIRES WRITTEN APPROVAL OF ALL SHOP DRAWINGS BEFORE STARTING PRODUCTION.
3. CUT-OUTS FOR SPRINKLERS, SPEAKERS, COLUMNS, FLOOR SLABS, ETC. ARE DONE IN FIELD BY OTHERS.
4. ALL OVERALL DIMENSIONS MUST BE VERIFIED IN FIELD BY OTHERS.



REVISED AS REQUESTED	JA	12.05.04
ADDED TAGS BIA-025, 025A AND TAGS BIA-030, 030A AND MODIFIED SECTION G	JA	19/01/04 M.M.
MODIFIED PANEL DIMENSIONS, DETAILS, TAGS AND NOTES.	JA	14/08/03 M.M.
REV.	DESCRIPTION	BY DATE APP

**LAMCEL**  
entrances  
Part of the Railtech Architectural Group  
(814)457-4760 www.lamcel.com info@lamcel.com

client	GEORGE BUSH INTERCONTINENTAL AIRPORT HOUSTON TEXAS APM STATION AND PLATFORM		
contract number	10171		
drawing title	PANEL ELEVATIONS AND DETAILS		
drawn	J. ALBERT	date	APRIL 29 2003
verified		date	
approved	M. McDONALD	date	MAY 15 2003
scale	AS NOTED	drawing number	A-007
		revision	3